



PLYMOUTH ROAD

BARRY

PLYMOUTH ROAD

BARRY ISLAND, CF62 5TY

OFFERS OVER

£350,000 -

FREEHOLD



4 Bed



1 Bath



1552.00 sq ft

Located in the heart of Barry, this charming pre 1900 mid terrace blends timeless character with modern comfort. Thoughtfully renovated, the home retains its beautiful original features while meeting today's living standards.

Inside, you'll find two generous reception rooms perfect for relaxing or entertaining, along with four spacious double bedrooms offering plenty of room for family and guests. A well appointed bathroom completes the layout, ensuring everyday convenience.

The location is hard to beat, just a short stroll to Barry's beautiful beaches, ideal for morning walks or weekend outings. Families will also appreciate the excellent school catchment, including Barry Island Primary and Whitmore High School.

This Barry Island home is more than just a property, it's a lifestyle. Combining historic charm, modern upgrades, and a sought after coastal setting, it's an opportunity not to be missed.

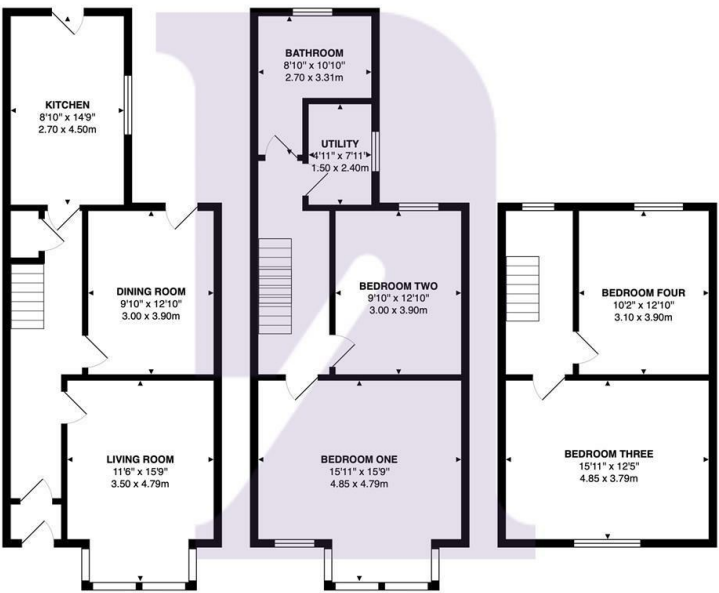




Energy Efficiency Rating		
	Current	Potential
Very energy efficient - lower running costs		
(92 plus) A		84
(81-91) B		
(69-80) C	71	
(55-68) D		
(39-54) E		
(21-38) F		
(1-20) G		
Not energy efficient - higher running costs		
England & Wales		EU Directive 2002/91/EC



Plymouth Road, Barry, CF62 5TY



Total Area: 1552 ft² ... 144.2 m²
All measurements are approximate and for display purposes only

BARRY & THE VALE'S HOME FOR

STYLISH SALES
& LETTINGS



KNIGHTS